

COURSE SCHEDULE

The CNSA (Certified Newmarket Systems Analyst) Online course takes place over a six-week period. Instruction will be delivered via a webinar each Tuesday and Thursday from 10:00 AM - 11:30 AM EST.

Homework for hands-on practice will be assigned; however, the assignments should not exceed a time commitment of two hours per week.

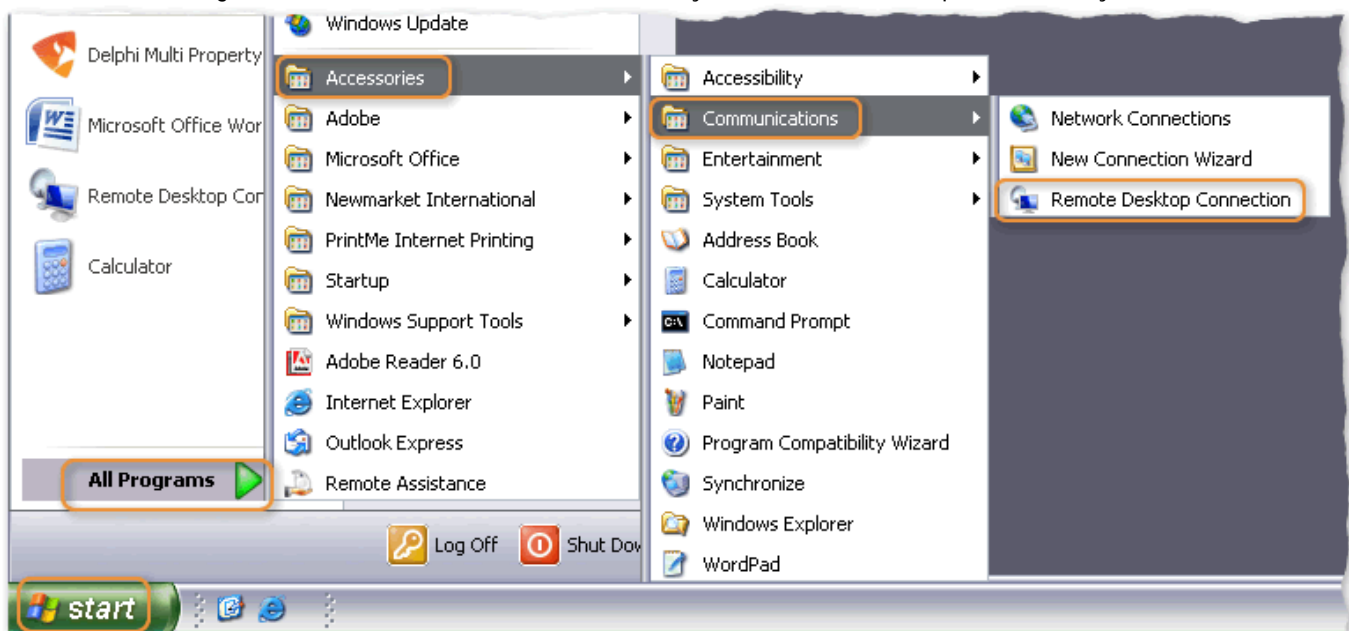
TECHNICAL REQUIREMENTS

Consult with your IT professional on the following requirements to ensure successful participation in the course.

Homework assignments will be completed in a test lab that you will access through Remote Desktop Connection. Your computer must be running Windows 95 or later and have the Remote Desktop Connection client software installed.

The Remote Desktop Connection software is pre-installed with Windows XP. To see if your workstation has the Remote Desktop Connection client, follow these steps:

1. Click the **Start** button on your taskbar.
2. Point to **All Programs > Accessories > Communications**. If you see Remote Desktop Connection, you're all set.



If you do not have the Remote Desktop Connection client, you can download it for free from the Microsoft® Download Center:

<http://www.microsoft.com/downloads/details.aspx?displaylang=en&FamilyID=80111f21-d48d-426e-96c2-08aa2bd23a49>

Additional requirements:

- High-speed Internet connection
- TCP port 3389 must allow RDP traffic

In addition to instructor-led webinars, you will access lessons through eLearning, which requires the following configuration on your workstation:

- Internet Explorer® 6.01 with JavaScript™ enabled
- Flash® Player 8.0 or higher
- Adobe® Reader® 7.0
- Screen resolution set to 1024 x 768
- Disable any pop-up blockers